



INDOFINE Chemical Company, Inc.

121 Stryker Lane, Bldg. 30, Suite 1 • Hillsborough, NJ 08844 • U.S.A.

Phone: (908) 359-6778 • FAX: (908) 359-1179

website: www.indofinechemical.com

e-mail: chemical@indofinechemical.com

CERTIFICATE OF ANALYSIS

Catalog Number: 06-1408

Product Name: **(+)-GALLOCATECHIN**

CAS Number: [970-73-0]

Lot Number: 1804934

Chemical Formula: C₁₅H₁₄O₇

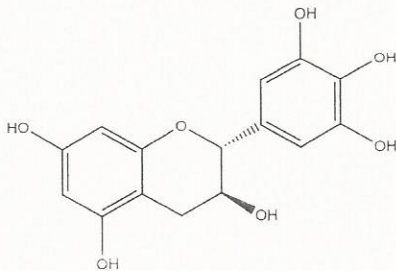
Molecular Weight: 306.27

Appearance: Off-white powder

Loss on Drying: 2.16%

Storage: Store at 2-8°C. Store away from light.

Purity(HPLC): 99.30%





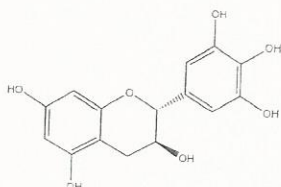
INDOFINE Chemical Company, Inc.

121 Stryker Lane, Bldg. 30, Suite 1 • Hillsborough, NJ 08844 • U.S.A.

Phone: (908) 359-6778 • FAX: (908) 359-1179

website: www.indofinechemical.com

e-mail: chemical@indofinechemical.com



HPLC ANALYSIS

Catalog No.: 06-1408
Product Name: (+)-Gallocatechin
Lot No.: 1804934

SAMPLE INFORMATION

Sample Name:	Gallocatechin	Acquired By:	System
Sample Type:	Unknown	Sample Set Name:	
Vial:	41	Acq. Method Set:	Gallocatechin
Injection #:	1	Processing Method:	Samples
Injection Volume:	5.00 ul	Channel Name:	238.0nm
Run Time:	25.0 Minutes	Proc. Chnl. Descr.:	PDA 238.0 nm

Auto-Scaled Chromatogram



Peak Results

	RT	Area	% Area	USP Plate Count	USP Resolution
1	11.837	9904525	99.30	29323.33	
2	18.034	31124	0.31	72119.10	22.41
3	19.399	38365	0.38	54534.96	4.49